

**Description**

CliniTro is a non- absorbable synthetic monofilament suture made from Polyvinylidene fluoride. CliniTro sutures meet all the general requirements established by the B.P., U.S.P. and the E.P.

**Indications**

CliniTro sutures are intended for use in procedures where non-absorbable monofilament sutures are indicated. General soft tissue approximation and/or ligation, including use in cardiovascular, ophthalmic and neurological procedures.

**Actions**

CliniTro sutures exhibit excellent tissue tolerance, having virtually no tissue reaction.

**Contraindications**

None known

**Warning**

Users should be familiar with surgical procedures and techniques before employing CliniTro sutures. Acceptable surgical practice should be followed with respect to drainage and closure of contaminated or infected wounds.

**Precautions**

In handling this or any other suture material, care should be taken to avoid damage from handling. Avoid crushing or crimping damage due to the application of surgical instruments, such as forceps or needle holders. The smooth surface of the monofilament strand requires that knots be placed carefully and additional knots may be necessary to achieve knot security. To avoid damage to needle points and swage areas, grasp the needle in an area one-third (1/3) to one-half(1/2) of the distance from the swaged end to the point. Reshaping needles may cause them to loose strength and be less resistant to bending and breaking. Users should exercise caution when handling surgical needles to avoid inadvertent needle sticks. Discard used needles in "sharps" container.

**Sterility**

CliniTro sutures are sterilized by ethylene oxide gas. Do not use if package is opened or damaged. Discard opened unused sutures.

**Storage**

Recommended storage conditions: 15°C to 30°C, away from direct heat. Do not use after expiry date.

**Adverse Reactions**

Potential Adverse effects

- Infection
- Dehiscence with need for retreatment
- Acute inflammation

These reactions may occur in patients who are hypersensitive to the materials

Broken needles may result in extended or additional surgeries or residual foreign bodies. Inadvertent needle sticks with contaminated surgical needles may result in transmission of blood-borne pathogens.

**How supplied**

CliniTro sutures are available in sizes 6/0 through 1. The suture is supplied attached to various needle types in boxes of one dozen.

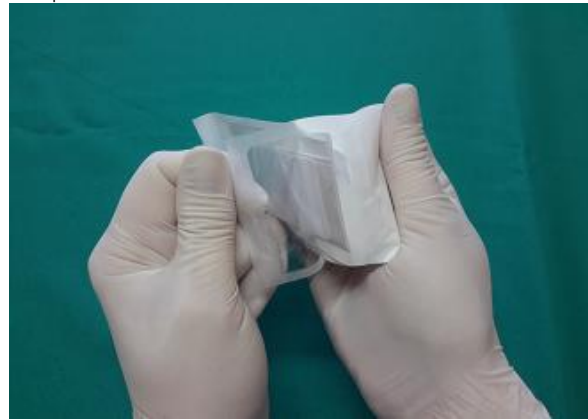


## INSTRUCTIONS FOR OPENING OF CLINITRO SUTURE

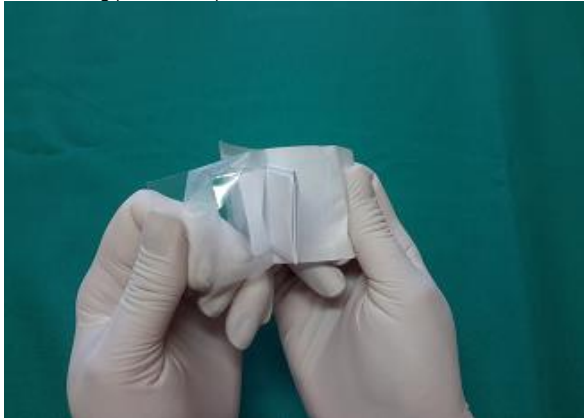
1. Hold suture facing you with opening on right side.



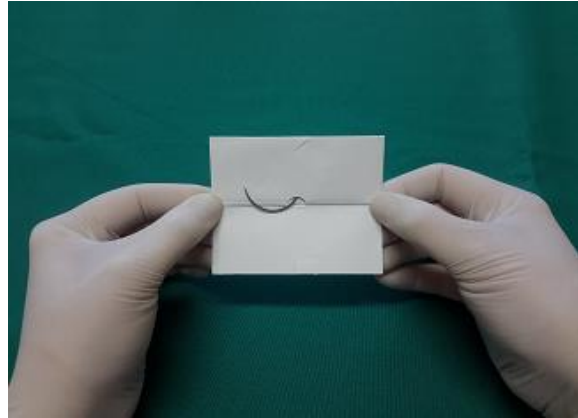
2. Open outer pouch by pulling it apart until inner pouch is exposed and remove.



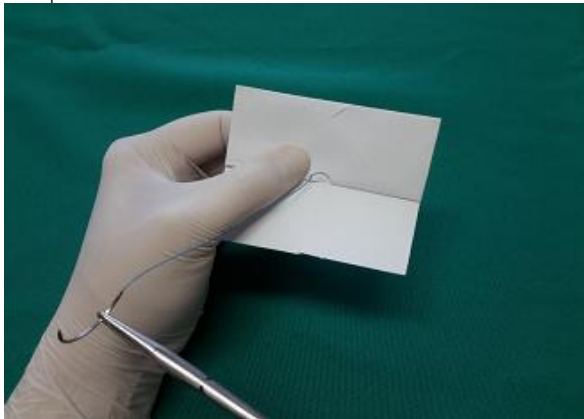
3. Remove inner pouch and open by pulling it apart until inner winding pouch is exposed.



4. Remove inner winding pouch to expose suture.



5. Secure needle in needle holder and pull out of winding pouch.



**The suture is now ready for use**



# CliniTro Sutures

